

For Machine Vision

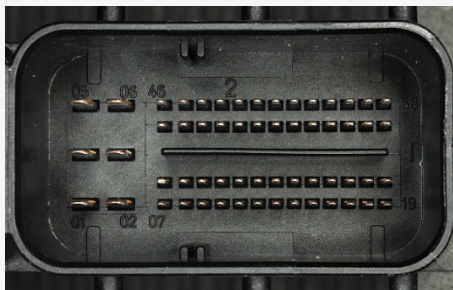
- Robust, reliable and long time Field-Approved
- Mobile robot integrable and space-saving setup
- Accurate for inspecting small parts at high throughput
- Ideal for difficult-to-access objects avoiding occlusions
- Metric 3D depth data
- No calibration to any structured light required



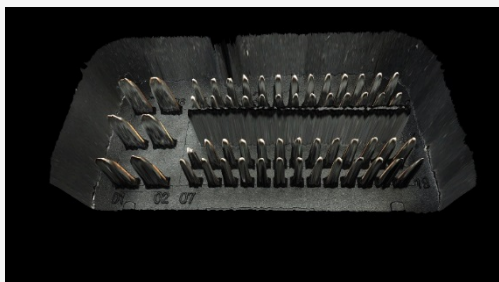
3D
Single-Lens
One-Shot
Compact-Camera



Application Example: Plug Inspection



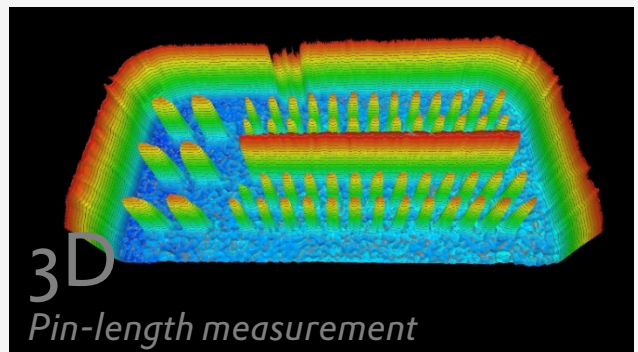
Top-view image taken in one-shot (above) results in fully reconstructed metric 3D data:



R5 High-Speed

- 1 MP @ up to 180 FPS
- Color/Mono/NIR
- GigE, USB 3.0, Camera-Link

Volume (mm)	Depth Accuracy (mm)
11 x 11 x 1.8	0,015
30 x 30 x 11	0,110
42 x 42 x 22	0,220
54 x 54 x 36	0,360



More info at:

Fon: 0049 431 5606 240, Email: info@raytrix.de